



FMI PRODUCTS, LLC

**DVM36/42 SERIES LOG SET/BURNER MODULES
INSTALLATION INSTRUCTIONS**

**For Use With (V)TC36 Series, (V)VC36/42 Series, (V)KC36/42 Series
or DVC Series Fireplaces**

This log set/burner module must be installed by a qualified service agency.

Read these instructions completely before installing this log set/burner module.

Before proceeding, make sure the gas control valve is in the OFF position, all electrical power to the appliance, if any, is off and the fireplace is cool to the touch.

CAUTION: The gas supply shall be shut off prior to disconnecting the electrical power, if any, before proceeding with this installation.

Tools Required

- 7/8" Open End Wrench or Adjustable Wrench
- 3/4" Open End Wrench or Adjustable Wrench
- Torx T20H or Slotted Screwdriver or Power Screwdriver
- 5/32" Allen Wrench
- #2 Phillips Screwdriver or Power Screwdriver
- Thread Sealant (Resistant to Propane/LP)

**REMOVING EXISTING LOG SET/
BURNER MODULE**

If your fireplace has a log set/burner module currently installed, follow these instructions to carefully remove the existing module. Be careful to follow all safety instructions.

Make sure your unit is off and has had time to cool if it has been in use.

CAUTION: Use gloves when removing the log set/burner module from your firebox. Some metal edges may be sharp. Use caution with log sets as logs are fragile.

Removing Louver Panels

Remove the top and bottom louver panels by simultaneously pulling both top end spring latches towards the center of the appliance until they are disengaged from the locating holes (see Figure 1). Repeat for bottom spring latches and pull the louvers outward. To install or replace items removed, simply reverse the procedures above.

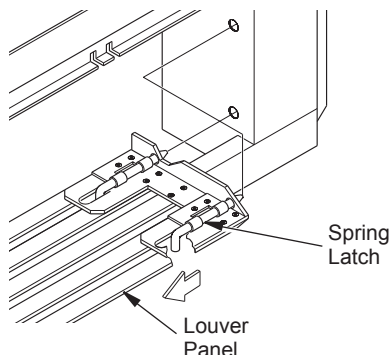


Figure 1 - Removing Louver Panel

Save for future reference.

For more information, visit www.fmiproducs.com

Connecting and Disconnecting Gas Line

WARNING: A qualified service person must connect and disconnect fireplace with gas supply. Follow all local codes.

1. Using a 5/16" hex socket wrench or nut-driver, connect or disconnect flexible gas line and control valve (see Figure 2).
2. After connecting gas line to control valve, always test for leaks.

WARNING: Never use an open flame to check for a leak. Apply noncorrosive leak detection fluid to joints. Bubbles forming show a leak. Correct leaks at once.

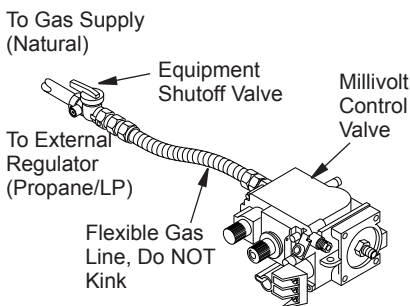


Figure 2 - Connecting/Disconnecting Gas Line to Millivolt Valve

Opening Glass Door

1. Remove screen assembly by pushing the rod either left or right and then down and forward. Set assembly aside.
2. Lift up on latches of door to unlock. There are two on top of firebox and two below firebox that hold glass door in place (see Figure 3).

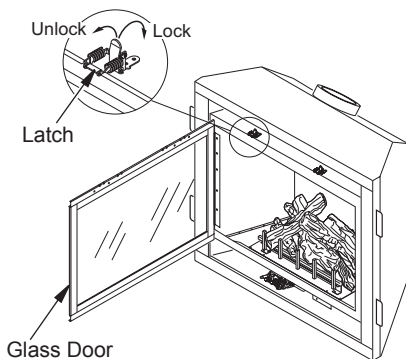


Figure 3 - Opening Glass Door [(V)TC36 Series Model Shown]

Certification Labeling

Existing certification labels are located on the Lighting Instruction Plate inside the gas valve compartment area. DO NOT REMOVE THE EXISTING LABEL. This label contains important information such as the serial number which may need to be referenced with warranty issues. A new set of labels are attached to the burner and contain information about the new fireplace.

Removing Log Set/Burner Modules (V)TC36 and (V)VC36/42 Series

See Figure 4, page 3 regarding the (V)TC36 and (V)VC36 series or Figure 5, page 3 for (V)VC42 series.

1. Remove 4 screws that attach the grate to plenum and burner. For (V)VC36 and (V)VC42 series, grate is attached to rear of plenum (see Figure 5, page 3). Lift log/grate assembly and discard. Two logs are attached to burner.
2. Remove embers from burner and discard.
3. Remove screws from plenum. Lift up and pull out to remove plenum.
4. Remove two back screws from burner (36" models only) and loosen screw on pilot bracket (see Figure 6, page 3).
5. Lift main burner and pull forward to remove.
6. Remove 12 screws from firebox burner base. Lift entire base from unit.

7. Remove gasket from firebox. A new gasket is included with the new log set/burner module.
8. Remove screws from flame shield. Flame shield is located over the venting hole in upper portion of firebox. A new flame shield is supplied with the new module (see Figure 7)

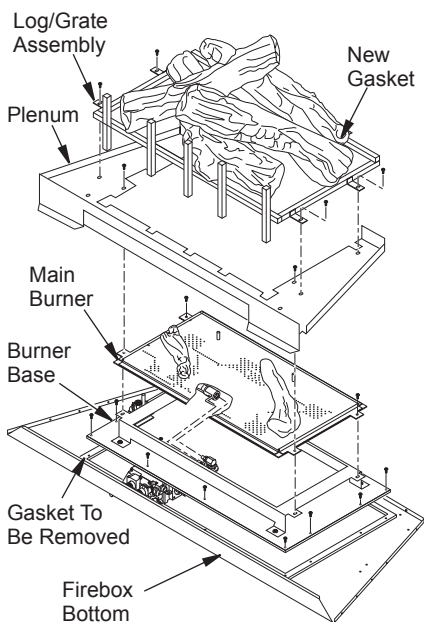


Figure 4 - Removing/Installing (V)TC36 and (V)VC36 Series Log Set/Burner Modules [(V)TC36 Shown]

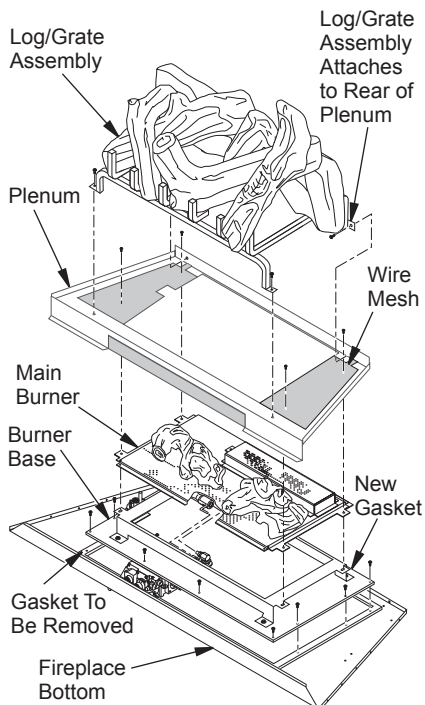


Figure 5 - Removing/Installing (V)VC42 Series Log Set/Burner Module

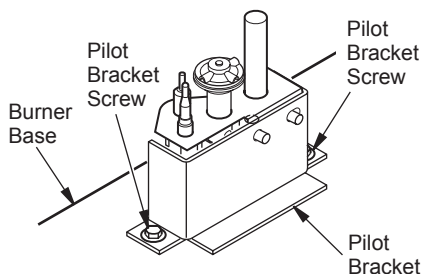


Figure 6 - Loosen Pilot Bracket Screws

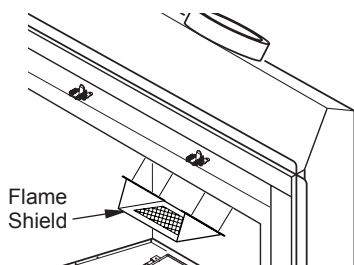


Figure 7 - Remove Flame Shield (Flame Shield Will Vary by Model)

Removing Log Set/Burner Modules

(V)KC36/42 Series

See Figure 8 regarding the (V)KC36 and (V)KC42 series.

1. Remove screws that attach grate to plenum. Remove grate.
2. Remove screws attaching logs to plenum. Screws are located through a wire mesh attached to logs on either side. Lift pod from center of log set and discard. Lift logs by the bottom of the assembly and discard (see Figure 8).
3. Remove embers from burner and discard.
4. Remove screws from plenum. Lift up and out on plenum to remove.
5. Pull forward and up to remove burner.
6. Remove 12 screws from firebox burner base. Lift air baffle and base from unit and discard.
7. Remove gasket from firebox. A new gasket is included with the new log set/burner module.

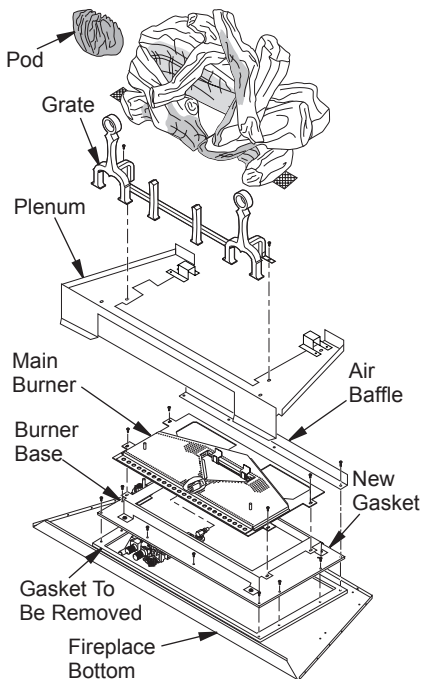


Figure 8 - Removing/Installing (V)KC36 and (V)KC42 Series Log Set/Burner Modules

8. Remove screws from flame shield. The flame shield is over the venting hole in the upper portion of the firebox. A new flame shield is supplied with the new module (see Figure 7, page 3).

Installing (V)TC36 and (V)VC36/42 Series Modules

See Figure 4 on page 3 regarding the (V)TC36 and (V)VC36 series or Figure 5 on page 3 for (V)VC42 series.

1. Verify a gasket is attached to bottom of burner module. If not, see *Replacement Parts* in owner's manual provided.
2. Burner is attached to burner base. Remove screws to detach burner from base. Loosen screw on pilot bracket attached to burner base (see Figure 9). This is to prevent pilot from being damaged by burner during installation.
3. Carefully maneuver burner base into firebox. Use black hex screws provided to attach burner base to firebox.
4. Place burner on burner base and align holes. The orifice will seat inside the air shutter when burner is installed correctly. **For 36" models**, secure burner to base through back two screw holes with black hex screws provided. Tighten pilot bracket screws. Verify air shutter is open 3/16" for natural gas and fully open for propane/LP gas.
5. Place plenum over burner. Align front slots with holes on burner. Secure using screws provided. **For 36" models**, front screws will go through plenum, burner and burner base. **For 42" models**, all four screws will go through all three pieces (see Figure 4 on page 3 for (V)TC36 and (V)VC36 series or Figure 5 on page 3 for (V)VC42 series).
6. Using black hex screws provided, attach new flame shield to upper portion of firebox as shown in Figure 7, page 3.

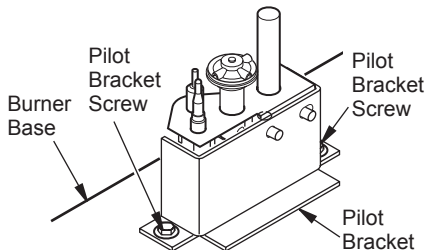


Figure 9 - Loosen Pilot Bracket Screws

7. Lift new log set/grate assembly by grate and place onto burner module assembly. Secure using black phillips screws provided.
8. Place embers (provided) onto burner covering port holes.
9. Close glass door and secure latches.
10. Reconnect gas line to gas valve and check for leaks (see *Connecting and Disconnecting Gas Line*, page 2).
11. Reinstall screen by inserting one end of the screen rod assembly into the hole inside of either the left or right side of firebox, pushing the rod toward that side of the firebox and moving the rod up until it seats in the hole on the other side. Lift the rod slightly so it sits in the bracket at the center of the firebox.
12. Reinstall louver panels (see *Removing Louver Panels*, page 1).
8. Set grate in place and secure using screws provided.
9. Place embers (provided) onto burner.
10. Close glass door and secure latches.
11. Reconnect gas line to gas valve and check for leaks (see *Connecting and Disconnecting Gas Line*, page 2).
12. Reinstall screen by inserting one end of screen rod assembly into the inside of either the left or right side of firebox, pushing rod toward that side of firebox and moving rod up until it seats in hole on other side. Lift rod slightly so it sits in bracket at center of firebox.
13. Reinstall louver panels (see *Removing Louver Panels*, page 1).

Installing (V)KC36/42 Series Module

See Figure 8, page 4 regarding the (V)KC36 and (V)KC42 series.

1. Verify a gasket is attached to bottom of burner module. If not, see *Replacement Parts* in owner's manual provided.
2. Burner is attached to burner base. Place entire module into firebox. Place air baffle at back of burner base so holes line up. If installing 42" propane/LP module, air baffle is not included and does not need to be installed. Using black hex screws provided, attach air baffle (if applicable) and burner base to firebox.
3. Remove 4 screws that attach burner to burner base and set aside.
4. Place plenum onto unit. Align holes in plenum with holes in burner and replace screws removed in step 3 or use black hex screws provided.
5. Using black hex screws provided, attach new flame shield to upper portion of firebox as shown in Figure 8, page 4.
6. When placing log set, the back logs will rest on metal steps attached to plenum. Lifting log set by the bottom of the assembly only, place log set on burner assembly. Center log set in firebox. Secure log set to plenum using screws provided. Screws go through a wire mesh attached to logs on either side. The mesh allows for more movement to align log set in firebox.
7. Gently place pod into center of log set. Pod will rest on metal brackets in center of burner.

HIGH ALTITUDE INSTALLATION

Your FMI PRODUCTS, LLC direct-vent fireplace has been tested and approved for elevations from 0-2000 feet (USA) and elevations from 0-4500 feet (Canada).

Fireplaces for High Altitude (models ending in -HA) are for installation above 4000 feet only. These fireplaces are equipped with parts specific for higher altitudes. **IMPORTANT:** These fireplaces can NOT be converted to Propane/LP gas.

When installing a non-high altitude fireplace at an elevation above 2000 feet (in the USA), you may need to decrease the input rating by changing the existing burner orifice to a smaller size. Reduce input 4% for each 1000 feet above sea level. Check with your local gas company for proper orifice size identification.

When installing this fireplace at an elevation above 4500 feet (in Canada), check with local authorities.

REPLACEMENT PARTS

Note: Use only original replacement parts. This will protect your warranty coverage for parts replaced under warranty. See *Replacement Parts* in your owner's manual.

TECHNICAL SERVICE

You may have further questions about installation, operation or troubleshooting. If so, contact FMI PRODUCTS, LLC's Customer Service Department at 1-866-328-4537. When calling, please have your model and serial numbers ready.

You can also visit our web site at

www.fmiproducts.com.

PARTS LISTS

DVM36T Series

Part No.	Description	DVM36TN	DVM36TP	DVM36TNE	DVM36TPE	DVM36TN-HA	Qty.
116209-01	Burner Assembly	•					1
116209-02	Burner Assembly		•				1
116209-03	Burner Assembly			•			1
116209-04	Burner Assembly				•		1
116209-05	Burner Assembly					•	1
116214-01	Log/Grate Assembly	•	•	•	•	•	1
116373-01	Plenum Assembly	•	•	•	•	•	1
110980-01	Flame Shield	•	•	•	•	•	1
11166	Black Hex Screw	•	•	•	•	•	25
11164	Black Phillips Screw	•	•	•	•	•	8

DVM36V Series

Part No.	Description	DVM36VN	DVM36VP	DVM36VNE	DVM36VPE	DVM36VN-HA	Qty.
116210-01	Burner Assembly	•					1
116210-02	Burner Assembly		•				1
116210-03	Burner Assembly			•			1
116210-04	Burner Assembly				•		1
116210-05	Burner Assembly					•	1
116215-01	Log/Grate Assembly	•	•	•	•	•	1
116374-01	Plenum Assembly	•	•	•	•	•	1
116388-01	Grate Finials	•	•	•	•	•	2
110980-01	Flame Shield	•	•	•	•	•	1
11166	Black Hex Screw	•	•	•	•	•	25
11164	Black Phillips Screw	•	•	•	•	•	8

DVM36K Series

Part No.	Description	DVM36KN	DVM36KP	DVM36KNE	DVM36KPE	DVM36KN-HA	Qty.
116541-01	Burner Assembly	•					1
116541-02	Burner Assembly		•				1
116541-03	Burner Assembly			•			1
116541-04	Burner Assembly				•		1
116541-05	Burner Assembly					•	1
116217-01	Log Assembly	•	•	•	•	•	1
111871-04	Grate Assembly	•	•	•	•	•	1
116543-01	Plenum Assembly	•	•	•	•	•	1
116857-01	Flame Shield	•	•	•	•	•	1
11166	Black Hex Screw	•	•	•	•	•	25
11164	Black Phillips Screw	•	•	•	•	•	8
110986-01	Air Baffle	•		•		•	1

PARTS LISTS (Continued)

DVM42K Series

Part No.	Description	DVM42KN	DVM42Kp	DVM42KNE	DVM42KPE	DVM42KN-HA	Qty.
116542-01	Burner Assembly	•					1
116542-02	Burner Assembly		•				1
116542-03	Burner Assembly			•			1
116542-04	Burner Assembly				•		1
116542-05	Burner Assembly					•	1
116218-01	Log Assembly	•	•	•	•	•	1
111871-03	Grate Assembly	•	•	•	•	•	1
116543-02	Plenum Assembly	•	•	•	•	•	1
109144-02	Air Baffle	•	•	•	•	•	1
116857-01	Flame Shield	•	•	•	•	•	1
11166	Black Hex Screw	•	•	•	•	•	25
11164	Black Phillips Screw	•	•	•	•	•	8

DVM42V Series

Part No.	Description	DVM42VN	DVM42VP	DVM42VNE	DVM42VPE	DVM42VN-HA	Qty.
116211-01	Burner Assembly	•					1
116211-02	Burner Assembly		•				1
116211-03	Burner Assembly			•			1
116211-04	Burner Assembly				•		1
116211-05	Burner Assembly					•	1
116216-01	Log/Grate Assembly	•	•	•	•	•	1
116375-01	Plenum Assembly	•	•	•	•	•	1
116388-01	Grate Finials	•	•	•	•	•	2
110980-01	Flame Shield	•	•	•	•	•	1
11166	Black Hex Screw	•	•	•	•	•	25
11164	Black Phillips Screw	•	•	•	•	•	8


FMI PRODUCTS, LLC
2701 S. Harbor Blvd.
Santa Ana, CA 92704
1-866-328-4537
www.fmiproductions.com

118100-01
Rev. D
03/10