

Direct Vent Gas Fireplaces

WELCOME GREAT  
STYLE INTO YOUR HOME



MONESSEN





# MAKE A STYLISH STATEMENT.

With a variety of options, ranging from specialty and contemporary to more traditional styles, you're sure to find the Monessen direct vent gas fireplace to create a statement that's in perfect step with your new home or addition.

ALL OUR DIRECT VENT GAS FIREPLACES  
OFFER GREAT FEATURES LIKE THESE.

### CHECK OUT THE VIEW

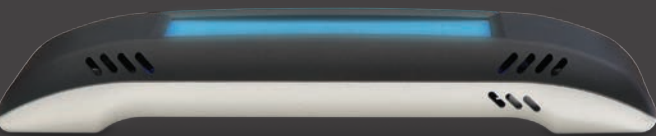
Designed to deliver a beautiful flame picture, all our fireplaces provide an expansive view of the fire that will delight friends and family.

### COZY COMFORT

No matter which style you choose, you can be sure everyone will cozy up to our Monessen fireplaces that deliver ample BTUs to help heat your home.

### EXCLUSIVE SIGNATURE COMMAND™ SYSTEM

Enjoy the ultimate in fireplace control, featuring a touch screen remote\* and 3-step flame height adjustment. With electronic ignition, this system lights the pilot only when you turn it on to help save energy. And, with automatic battery back-up, you can be assured of fireplace operation even if the power goes out.



Look for Total Signature Command™ on select models, featuring the exclusive Smart Mode® thermostat for enhanced energy efficiency, rear burner shut down and more!

READ MORE ABOUT SIGNATURE COMMAND™  
OPTIONS ON THE BACK COVER!

\*Available with select fireplaces. Signature Command™ not available with the Tribute Fireplace.



Belmont shown Black Porcelain Liner  
Cover: Manchester shown with Cottage Red Firebrick



## UNDERSTATED CHIC

A compact, easy-to-install fireplace that delivers a great-looking flame, the Tribute model offers excellent value in a stylish package. Enjoy dancing, realistic flames around an embossed refractory log set.

### TRIBUTE QUICK LOOK

Sizes	36"
Heating Capacity	Up to 900 sq. ft.
Max BTUs	21,000
Thermal Efficiency	Up to 78%
Control System	Millivolt Control

### ADDITIONAL FEATURES

- Aluminized Dual Steel Burner
- Flexible installation — Tribute fireplaces ship natural gas ready with a propane conversion kit available. Order either a top- or rear-venting model to best accommodate your space.

### DESIGN OPTIONS

#### Finishing



Black Trim



Tribute



CDV

## A CHARMING CENTERPIECE

Available in four sizes, the CDV Series offers flexible installation options designed to add warmth and ambiance to any room. As time goes on and your décor evolves and changes, this classic fireplace will continue to be the place where everyone gathers.

### CDV QUICK LOOK

Sizes	33", 36", 42", 47"
Heating Capacity	Up to 1,100 sq. ft.
Max BTUs	24,000
Thermal Efficiency	Up to 80%
Control System	Signature Command™ or Millivolt



### ADDITIONAL FEATURES

- Natural Flame burner system
- Removable unitized black louver assembly for ease of installation
- Available in dedicated rear or top vent units
- Mesh Glass Cover also available

### DESIGN OPTIONS

#### Interior Firebrick



Cottage Clay

#### Finishing



Stainless Steel Louvers



Black and Stainless Trim available in Medium (shown) and Curved styles



#### Cabinet Options for 33", 36" and 42" CDV



Barrington Dark Walnut Wall Cabinet



Barrington Unfinished Walnut Wall Cabinet



## AGLOW WITH CLASSIC STYLE

With four BDV Series models to choose from, you can bring cozy warmth to any room. Create just the right look with optional firebrick and trim packages.

### BDV QUICK LOOK

Sizes	33", 36", 42", 47"
Heating Capacity	Up to 1,020 sq. ft.
Max BTUs	26,000
Thermal Efficiency	Up to 80%
Control System	Signature Command™ or Millivolt



### ADDITIONAL FEATURES

- Natural Flame burner system
- Deluxe control panel
- Mesh Glass Cover also available

### DESIGN OPTIONS

#### Interior Firebrick



Cottage Clay



Cottage Red

#### Finishing



Stainless Steel Louvers



Black and Stainless Trim available in Medium (shown) and Curved styles



#### Cabinet Options for 33", 36" and 42" BDV



Honey Oak Wall or Corner Cabinet



Dark Cherry Wall or Corner Cabinet



Barrington Dark Walnut Wall Cabinet



Unfinished Birch Wall or Corner Cabinet (Available in corner styles by special color)



Unfinished Oak Wall or Corner Cabinet (Available in corner styles by special color)



Barrington Unfinished Walnut Wall Cabinet



BDV shown with Cottage Clay Firebrick and Arched Front

### FINISHING OPTIONS

Available in Black Texture and Iron Age:

- Filigree Panels and Mesh Glass Cover also available (not pictured)



Cabinet Doors with Screen



BDV shown with Cottage Clay Firebrick



BDV shown with Cottage Clay Firebrick and Arched Front



# MODERN DRAMA

Contemporary style, conveniently offered in three sizes to best fit your room. Customize your look and show off your design skills with a wide range of compatible add-ons for the Belmont fireplace system. From alternate firebrick choices to optional stone and glass kits, there are plenty of ways to create a fireplace that is uniquely yours.

## BELMONT QUICK LOOK

Sizes	33", 36", 42"
Heating Capacity	Up to 1,175 sq. ft.
Max BTUs	27,000
Thermal Efficiency	Up to 80%
Control System	Signature Command™



## ADDITIONAL FEATURES

- Ember bed burner
- Clean face design
- Forced air blowers
- Available in top vent only
- Mesh Glass Cover also available

## DESIGN OPTIONS

### Interior Firebrick



Cottage Clay



Cottage Red



Vintage Brown Herringbone

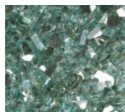
Black Porcelain Liner, Floor Illumination Kit and Accent Light also available (not pictured)

### Finishing

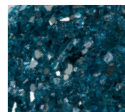


Forged Andirons 12"

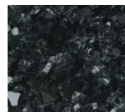
### Fireglass



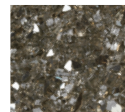
Emerald



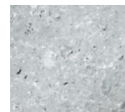
Sapphire



Onyx



Bronze



Diamond



Stone and Glass Burner Kit



Glass Burner Kit



Log Set



Belmont shown with Black Porcelain Liner, Contemporary Stone Kit and Quadra Stone Surround (available for 36" models only)



Belmont shown Black Porcelain Liner



Belmont shown with Vintage Brown Herringbone Firebrick



Belmont shown with Black Porcelain Liner, Contemporary Stone and Glass Kit and Contemporary Flush Face (available for 33" and 36" models only)



# BRILLIANT BEAUTY

With a range of more traditional design options, like louvers, arched fronts and doors, you can achieve a classic look that becomes a centerpiece of style for your home. Plus, the large format provides a wide viewing area that showcases the dancing flames from anywhere in the room.

## MANCHESTER QUICK LOOK

Sizes	42", 47"
Heating Capacity	1,500 – 1,600 sq. ft.
Max BTUs	32,000
Thermal Efficiency	Up to 80%
Control System	Signature Command™



## DESIGN OPTIONS

### Interior Firebrick



Cottage Clay



Cottage Red

### Finishing



Stainless Steel Louvers



Black and Stainless Trim available in Medium (shown) and Curved styles

## FINISHING OPTIONS

Available in Black Texture and Iron Age:

- Filigree Panels and Mesh Glass Cover also available (not pictured)



- Arched Fronts

- Cabinet Door Frame

Cabinet Doors with Screen



Manchester shown with Cottage Red Firebrick and Arched Front in Iron Age



Manchester shown with Cottage Clay Firebrick



# THREE VIEWS, ONE FIREPLACE

With three different configuration options, the Arlington Designer Series adds a dramatic accent to any room. Each style allows you to view the fire from multiple sides, while interior options like contemporary glass and stone and light kits transform your fireplace into a statement piece, even when it isn't lit.

## SPECIALTY MODEL

### ARLINGTON QUICK LOOK

Sizes	See-Thru, Corner, Peninsula
Heating Capacity	1,780 sq. ft.
Max BTUs	25,000 – 37,000
Thermal Efficiency	Up to 80%
Control System	Signature Command™



### DESIGN OPTIONS

#### Interior Firebrick



Cottage Red



Vintage Brown  
Herringbone

Black Porcelain  
Liner and Accent  
Light also available  
(not pictured)

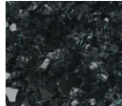
#### Fireglass



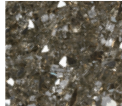
Emerald



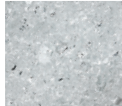
Sapphire



Onyx



Bronze



Diamond



Contemporary Stone with Bronze Glass Ember Bed  
Note: Glass kits include one 2.25 lb. bag.  
Arlington Designer units require 2 bags.



Arlington See-Thru shown with Log Set,  
Cottage Red Firebrick and optional Light Kit



Arlington Corner shown with Porcelain Panels  
and Contemporary Stone and Glass



Arlington Peninsula shown with  
Log Set, Cottage Red Firebrick,  
Barrington Dark Walnut Cabinet  
and optional Accent Light

Note: Cabinet available  
for Peninsula model only. See  
Cabinet dimensions on page 15.

MONESSEN DIRECT VENT SYSTEMS LINEUP

MODEL	TRIBUTE		CDV								BDV			
SIZES	36"		33"	36"	42"	47"	33"	36"	42"	47"				
Model #s	CDVZ		CDV33	CDV36	CDV42	CDV47	BDV300	BDV400	BDV500	BDV600				
Standout Feature	Flexible installation with dedicated top and rear vent units.		Multiple sizes and venting options for a versatile installation								Many choices for finishing to fit any decor			
Control System	Millivolt Control		Signature Command™ or Millivolt								Signature Command™ or Millivolt			
Max heating capacity (sq ft)	900		785	720	1,100	1,090	835	940	1,015	1,020				
Viewing style	Front, Clean Face		Front, Louvered								Front			
Maximum viewing area (sq in)	589		413	592	674	796	486	591	672	795				
Max BTU/h*	21,000		18,000	20,000	24,000	24,000	21,000	24,000	26,000	26,000				
Thermal efficiency	Up to 78%		Up to 80%								Up to 80%			
Burner system	Aluminized Dual Steel		Natural Flame								Natural Flame			
AFUE Efficiency	Up to 63%		Up to 66.3%		Up to 66.4%		Up to 65.1%		Up to 63.2%		Up to 63.2%			
FE Ratings (Canada)	Rear: 67% NG	Top: 57% NG	Rear: 57.6% NG, 64.3% LP	Top: 47.6% NG, 55.4% LP	Rear: 49.7% NG, 56.1% LP	Top: 47.6% NG, 55.4% LP	Rear: 71% NG, 72.3% LP	Top: 59.1% NG, 67.6% LP	Rear: 69.6% NG, 70.6% LP	Top: 56.6% NG, 65.7% LP	61.8% NG 55.7% LP	61.1% NG 60.7% LP	61.3% NG 60.8% LP	60.9% NG 60.5% LP
Dimensions (Actual)	35 ¼" W 35" H 16 ⅝" D		Rear: 33" W 35 ⅞" H 13 ⅛" D	Top: 33" W 35 ⅝" H 14 ½" D	37 ¼" W 38 ⅝" H 15 ¾" D		41" W 38 ⅝" H 15 ¾" D		47" W 38 ⅝" H 15 ¾" D		33 ¼" W 37 ⅞" H 14" D	37 ¼" W 41 ½" H 16" D	41 ⅛" W 41 ½" H 16" D	47 ⅛" W 41 ½" H 16" D
Dimensions (Framing)	36 ¼" W 35" H 17 ⅞" D		33 ¼" W 35 ⅞" H 13 ⅛" D		37 ½" W 39" H 15 ¼" D		41 ¼" W 39" H 15 ¼" D		47 ¼" W 39" H 15 ¼" D		33 ½" W 38" H x 13 ¾" D	37 ½" W 41 ⅝" H 15 ¾" D	41 ½" W 41 ⅝" H 15 ¾" D	47 ½" W 41 ⅝" H 15 ¾" D
ACCESSORIES														
Remotes	Optional		Optional								Optional			
Blower Kits	Optional		Optional								Optional			
Field Fuel Conversion Kit	LP conversion kit available		Available								Available			

BELMONT			MANCHESTER		ARLINGTON		
33"	36"	42"	42"	47"	36" DESIGNER		
BLDV300	BLDV400	BLDV500	MDV500	MDV600	STLDV, PFLDV, CLLDV, CRLDV		
Stylish finishing options from traditional to contemporary			Wide viewing area, increased warmth and multiple finishing options		3 different configurations for versatile style and installation options		
Signature Command™			Signature Command™		Signature Command™		
850	1,060	1,200	1,500	1,600	1,780		
Front, Clean Face			Front		See-Thru, Corner, Peninsula		
600	754	858	764	903	See Thru: 1,762	Peninsula: 2,000	Corner: 2,771
22,000	26,000	28,000	30,000	32,000	37,000		
Up to 80%			Up to 80%		Up to 80%		
Natural Flame			Natural Flame		—		
—	Up to 71%	Up to 68.1%	Up to 64%	—	67.01% NG 68.28% LP		
60.2% NG 64.2% LP	68.1% NG 62.8% LP	64.1% NG 67.9% LP	Up to 82%	Up to 78%	69.7% NG 79.4% LP		
34 ½" W 37 ¾" H 15 ⅞" D	37 ⅛" W 40 ⅝" H 17 ⅞" D	41 ⅛" W 41 ¾" H 17 ⅞" D	41" W 46 ⅙" H 22 ⅝" D	47" W 46 ⅙" H 22 ⅝" D	See Thru: 44" W 40 ⅝" H 23 ¾" D	Peninsula: 44" W 40 ⅝" H 23 ¾" D	Corner: 44" W 40 ⅝" H 23 ¾" D
34 ⅞" W 38 ⅞" H 15 ⅞" D	37 ⅞" W 41 ¾" H 17 ⅞" D	41 ⅞" W 41 ¾" H 17 ⅞" D	42 ⅙" W 46 ½" H 20 ⅜" D	48 ⅙" W 46 ½" H 20 ⅜" D	See Thru: 50 ⅙" W 48 ⅜" H 23" D	Peninsula: 46 ⅝" W 48 ⅜" H 23" D	Corner: 46 ⅝" W 48 ⅜" H 23" D
Optional			Optional		Optional		
Optional			Optional		Optional		
Available			Available		Available		

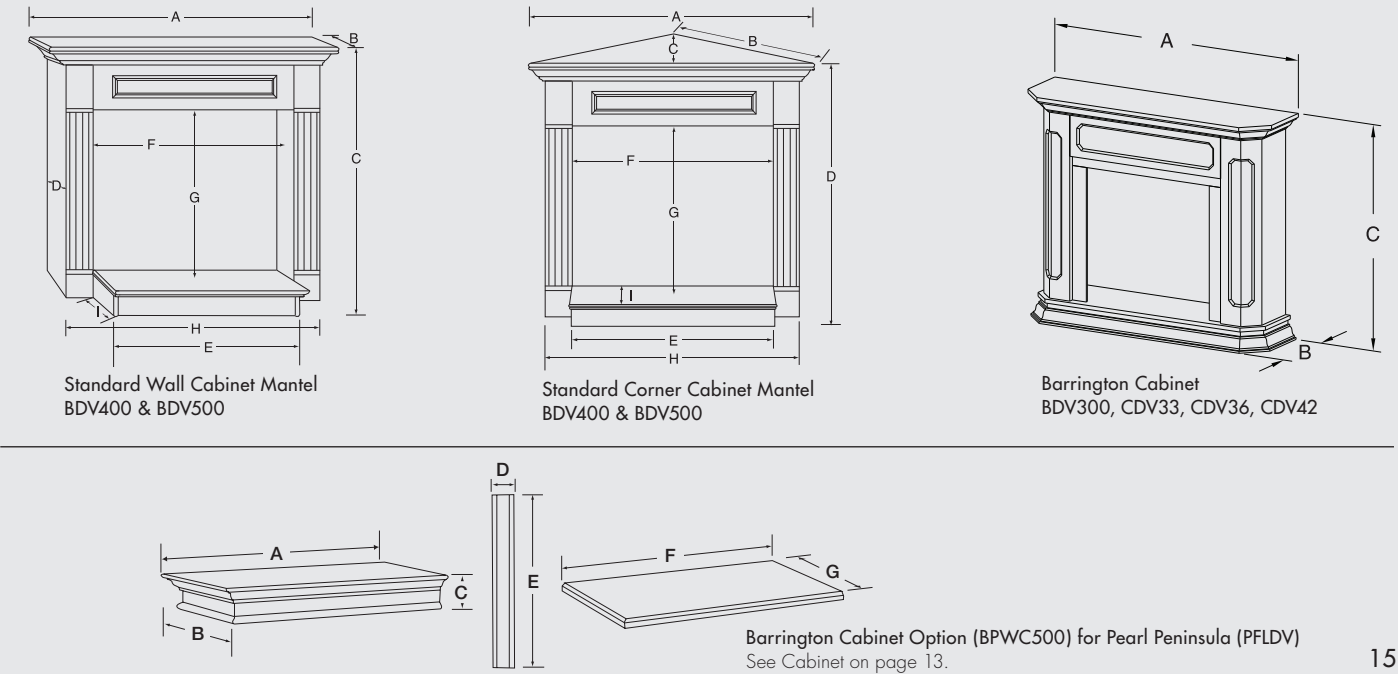
CABINET DIMENSIONS

PRODUCT	SURROUND	A	B	C	D	E	F	G	H	I	MAX ADJ OPENING	MIN ADJ OPENING	MAX FIREPLACE DEPTH
STANDARD WALL CABINET MANTELS													
BDV400	WSHGC32	57 ¾"	21"	49 ¾"	18"	39 ¼"	37 ¾"	35 ⅞"	52 ¼"	5"	—	—	—
BDV500	WSHGC36	61 ½"	22 ¼"	49 ¾"	19 ¾"	43 ¼"	41 ¾"	35 ⅞"	56 ¼"	5"	—	—	—
STANDARD CORNER CABINET MANTELS													
BDV400	CSHGC32	62"	43 ⅞"	35 ⅝"	49 ¾"	39 ¼"	37 ¾"	35 ⅞"	57 ¼"	5"	—	—	—
BDV500	CSHGC36	67 ½"	47 ¾"	39 ⅞"	49 ¾"	43 ¼"	41 ¾"	35 ⅞"	63"	5"	—	—	—
BARRINGTON CABINET													
BDV300, CDV33	BWC400	61 ⅞"	18 ¼"	50 ¾"	34 ⅜"	5"	47 ⅞"	30"	—	—	35 ½" W 32 ¾" H	32" W 29" H	14"
CDV36, CDV42	BWC500	67 ½"	22 ¼"	55"	—	—	—	—	—	—	42" W 37 ⅞" H	36" W 33" H	18"
PFLDV	BPWC500	48"	26"	7 ⅞"	5"	34 ⅜"	47 ⅞"	30"	—	—	—	—	—

Orange indicates upgrade from previous model.

\*For natural gas models.

All Monessen Direct Vent Fireplaces in this catalog are CSA Design Certified and available in both natural gas and LP configurations. Tribute model available as natural gas only with LP conversion kit available.





# ULTIMATE CONVENIENCE AT YOUR FINGERTIPS

Our direct vent gas fireplaces offer two  
**Exclusive Signature Command™ Systems.**

Discover the level of control that's right for you!

## Signature Command™ System

An A/C adaptor is included; however, unlike competing control systems that require A/C to function, the Signature Command™ System can be installed where no power is available, making it more convenient than ever to enjoy the fire.

### Featuring:

- ON/OFF 3-step variable flame height adjustment
- Automatic, uninterrupted battery back-up during power outages
- Pilot selection option — choice of cold climate standing pilot or the energy efficient intermittent pilot
- Memory shut off remembers your favorite setting the next time the fireplace is turned on
- Convenient diagnostic code indication lights
- Built-in remote receiver for the option to easily add a remote control

## Total Signature Command™ System

Enjoy the convenience of a technologically advanced and energy efficient fireplace control system!

### Featuring:

All of the features included with Signature Command™ System

### PLUS:

- Smart Mode® thermostat for enhanced energy efficiency — it automatically adjusts flame height and/or blower to maintain the desired temperature, using only the energy it needs to help save on fuel costs.
- TSFSC Full Function Touch Screen remote control
- Rear burner shut down feature lowers heat output as much as 70% for ambiance when heat is not needed (on select fireplaces)
- A/C accessory model for added control features, like household lighting, waterfall feature, and more!

Remotes and thermostats are available for all models for added convenience.



Touch screen hand held ON/OFF remote. A Touch Screen remote comes standard with Total Signature Command™ models.



Thermostat ON/OFF remote control with 3-step flame height adjustment and 3-step blower control with receiver.



Programmable wireless wall thermostat with receiver.



LOVE AT FIRST LIGHT

149 Cleveland Drive, Paris, Kentucky 40361  
monessenhearth.com

Your Monessen Dealer:



Warning: Hot glass will cause burns. Do not touch glass until cooled. Never allow children to touch glass.

To avoid personal injury or property damage, the product described by this brochure must be installed, operated and maintained in strict compliance with the instructions packaged with the product and all applicable building or fire codes. Contact local building or fire officials about restrictions and installation inspection requirements. All photographs and drawings on this brochure are for illustrative purposes only and are not intended for, nor should they be used as a substitute for the instructions packaged with the unit. Appearance and specifications of the product are subject to change without notice.  
©2012 Monessen 11264\_0712 MON1212 Ver.01

For more information about Monessen efficient and environmentally friendly products, please visit monessenhearth.com